

VZ-3neo Visualizer System



Driving Knowledge Creation

VZ-3neo Visualizer System



WolfVision is a provider of systems and services to leading universities, businesses, schools, and other organizations. An acknowledged 'technology leader' in the Visualizer and presentation solutions market, WolfVision is the company that takes the lead, setting standards worldwide for innovative, reliable, user-friendly, high performance presentation, and collaboration solutions. Our VZ-3neo Visualizer system includes all the core features that every user requires, and it is customizable with a range of options providing maximum flexibility in system selection.

With more than 40 years experience, our extensive knowledge and expertise across all application sectors enables us to offer comprehensive consultative guidance on customized combinations of hardware systems, software, apps, and accessories, which enhance communication, collaboration, and knowledge sharing across all environments. As part of each individual vSolution WolfVision offers not only pre-sales advice, but also post-sales support, training, and service, ensuring that you receive maximum benefit from your investment.

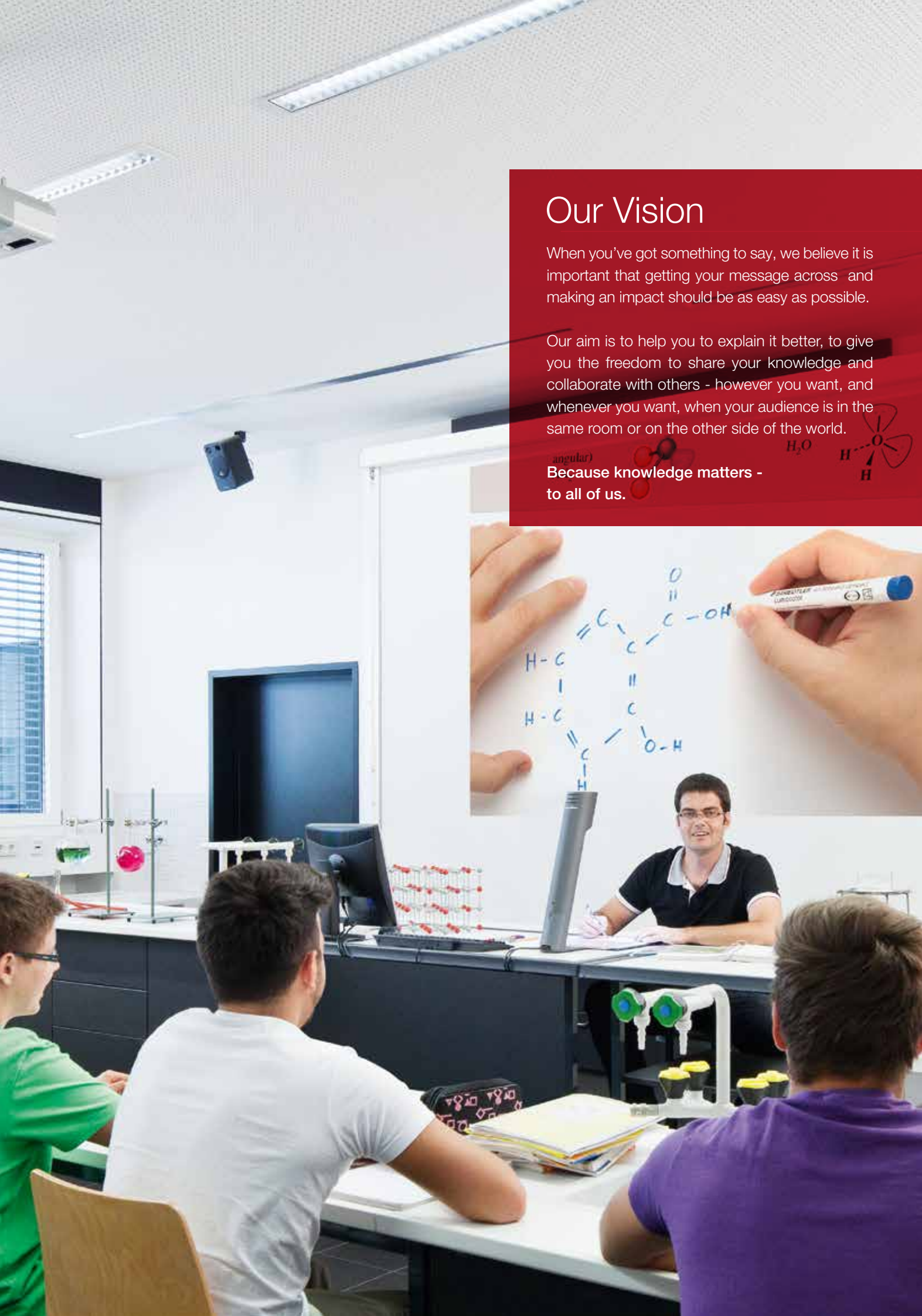
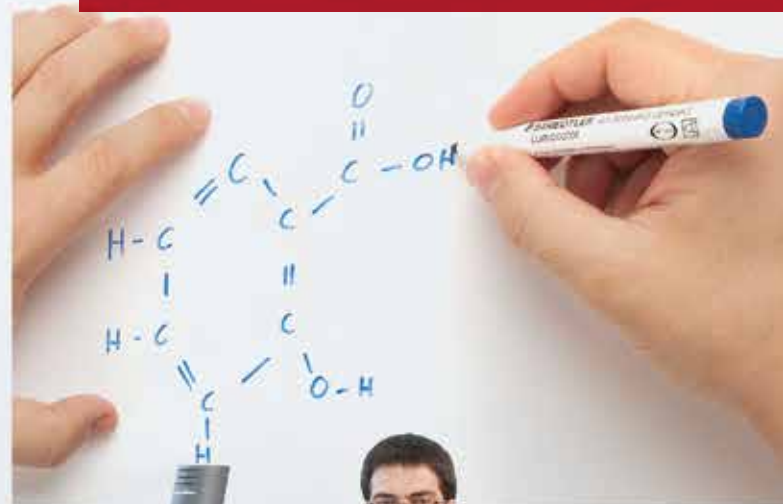
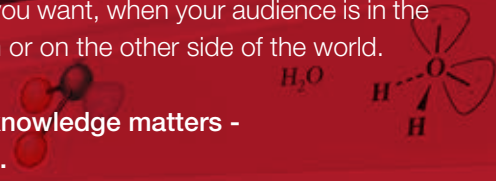


Our Vision

When you've got something to say, we believe it is important that getting your message across and making an impact should be as easy as possible.

Our aim is to help you to explain it better, to give you the freedom to share your knowledge and collaborate with others - however you want, and whenever you want, when your audience is in the same room or on the other side of the world.

angular)
**Because knowledge matters -
to all of us.**



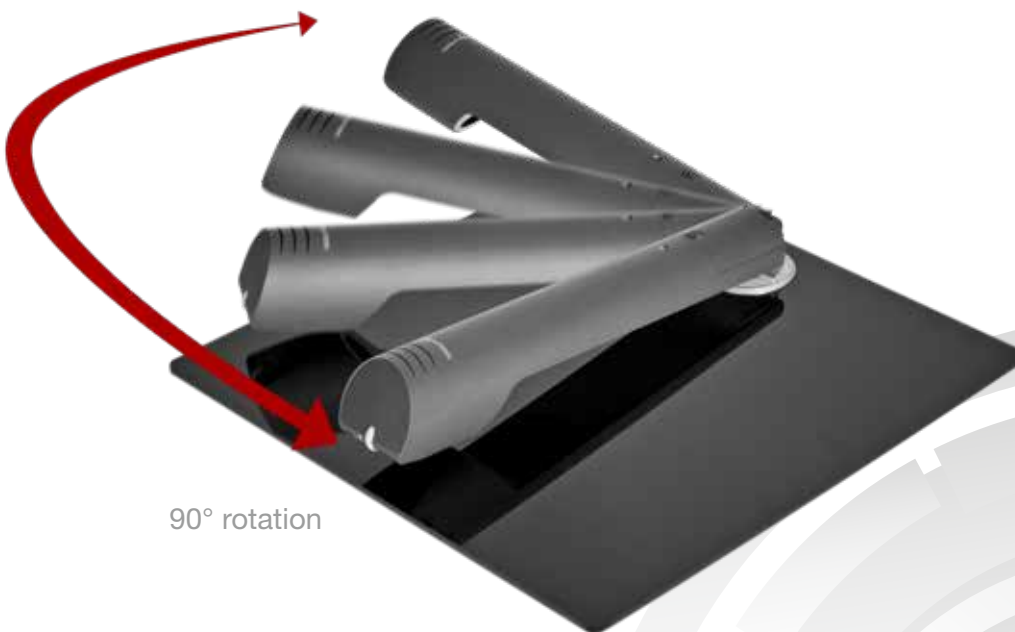
Space-Saving Imaging

Flexible Installation Options

VZ-3neo Visualizers are highly compact and portable systems that can easily be used to serve a number of different rooms. They are available either with or without an integrated working surface.

The version without working plate enables permanent mounting directly onto a desktop or podium using the supplied 'swivel plate'. The added advantage of this, is that the unit can be rotated sideways through 90° facilitating easy storage, and allowing the desktop surface area to remain completely obstruction-free.

This option is particularly useful if there are space restrictions, and it provides an additional installation option if the unit is required to fit into a particular room design. It is an ideal solution if the unit is to be installed on a podium.



90° rotation



++ Video ++

Key Features

Powerful zoom range

12x zoom for outstanding flexibility when displaying content on-screen. Images are always crystal clear, even when zooming in closely on materials.

Power over Ethernet Plus

The LAN port includes Power over Ethernet Plus (PoE+) functionality - a popular way of saving on cables and installation costs.

Visualizers built to last!

High quality components for outstanding mechanical quality, durability, and reliability. The VZ-3neo is built to last!

Remote management software

vSolution Link Pro software for easy remote setup, monitoring, management, and updating of systems.

Focus on the content

High speed continuous autofocus ensures crisp presentation of all on-screen content materials.

Adjustment-free lighting

No distracting hot spots or reflections - and no need to adjust the light. This LED Lighting system is optimised for perfect illumination.

No. 1 for imaging performance

Native 1080p full HD camera for presentation of content materials in unrivalled image quality.

Write on your Visualizer!

Self-adhesive dry-erase working surfaces available for convenient pickup and display of handwritten content materials.

Maximum ease of use

Simply use the zoom wheel, and leave other settings like focusing, brightness, and white balance to be adjusted automatically.

Flexible external control

Control via room management system or computer, or use the vSolution App for wireless control via a mobile device.



Technical specifications

Camera	1-CMOS 1/3", 30 frames per second in all resolutions
Effective pixels of camera sensor	1920x1080 (2,073,600)
Native signal output	1080p HD (1920x1080)
Converted output signals (4:3 and 5:4)	UXGA (1600x1200), SXGA (1280x1024) XGA (1024x768), SVGA, (800x600)
Converted widescreen output signals (16:9 and 16:10)	720p HD (1280x720), WUXGA (1920x1200), WXGA (1280x800)
Resolution (measured)	980 lines
Brightness control & White balance adjustment	Automatic and manual
Focusing Modes	High speed Continuous Autofocus, Manual Focus
On-screen menu and on-screen help	Yes
vSolution Link Pro software for remote management & firmware updates	Yes, included (for Windows 10 Desktop, Windows Server 2012 R2 & 2016)
Free firmware updates	Yes, via USB, LAN, and vSolution Link Pro
Zoom / Lens type	12x zoom (6x optical, 2x digital), multiple-speed zoom wheel
Max. object height on working surface	200mm (8.0") in tele position 320mm (12.6") in wide position
Max. pick-up area on working surface	Length: 290mm (11.42"), Width: 400mm (15.75")
Min. pick-up area on working surface (full resolution, optical zoom)	66 x 50mm (2.6" x 2.0")
Min. pick-up area on working surface (with digital zoom)	33 x 26mm (1.3" x 1.0")
Depth of focus on small object: 66 x 36mm (2.6" x 1.4")	15mm (0.6")
Depth of focus on large object: 360 x 200mm (14.1" x 7.9")	260mm (10.2")
Light source	Maintenance-free, high-brightness LED light system (high light output, low power consumption), lamp lifetime: 30,000 hours
UVC (Windows, Linux & macOS), PTP (Picture Transfer Protocol)	Yes
Reflection-free area on working surface	Yes, entire working surface
Intelligent folding system	Yes, mechanical arm
User-defined settings on USB stick	Yes
User programmable presets	1
Swivel plate with 90° rotation	Optional
External computer input/input switch	Yes, HDMI
Live to freeze comparison (Picture in Picture)	Yes
Built-in digital scaler for the computer input	Yes (processes the signal from HDMI input for HDMI output)
Image memory	1 image freeze
Alternative image display	Negative image / negative-blue image / black and white image
Connectors	1x HDMI In, 1x HDMI Out, 1x LAN port, 1x mini USB 2.0 device port, 1x USB 2.0 host port
Advanced controlling with professional protocol	Yes, via LAN and USB
vSolution App compatible	Yes, wireless control via a mobile device (app available for iOS, iPadOS, Android, and Windows)
Dimensions in operation (L x W x H)	488mm x 305mm x 525mm (19.2" x 12" x 20.7")
Dimensions when folded (L x W x H)	574mm x 305mm x 135mm (22.6" x 12" x 5.3")
Weight	3.76kg (8.3lbs)
Anti-theft devices	T-Lock (Kensington® Lock), and table lock bolt
Power	External desktop power pack 12V: multi range 100-240V, 24W, Power over Ethernet Plus (IEEE 802.3at-2009 standard)
Included accessories	Cable shield, power supply with cord 1.8m (5'11"), LAN cable 1.8m (5'11"), mini USB cable 1.8m (5'11")
Optional accessories	Dry-erase working surface, carrying case
Warranty / Made in	5 years / EU Austria

Design and specifications subject to change | Printed in Germany, January 2020

Your WolfVision Partner:



Head Office:

WolfVision GmbH
6833 Klaus / Austria
Tel. +43 5523 52250
wolfvision@wolfvision.com

Japan Sales Office
WolfVision Co. Ltd.
Tel. +81 3 6233 9465
wolfvision.japan@wolfvision.com

USA Sales Office
WolfVision, Inc.
Tel. +1 770 931 6802
sales@wolfvision.us

Nordic Sales Office
WolfVision Nordic (Norway)
Tel. +47 9186 9736
wolfvision.nordic@wolfvision.net

UK Sales Office
WolfVision UK Ltd.
Tel. +44 1628 509 067
wolfvision.uk@wolfvision.com

Middle East Sales Office
WolfVision Middle East (Dubai)
Tel. +971 5617 40008
wolfvision.mideast@wolfvision.com

Asia Sales Office
WolfVision Pte. Ltd. (Singapore)
Tel. +65 6636 1268
wolfvision.asia@wolfvision.net

Germany Sales Office
WolfVision GmbH
Tel. 0800 9828 787
wolfvision.deutschland@wolfvision.com

